

A text description of this figure is provided in Chapter 5, *Text Descriptions of Figures*.

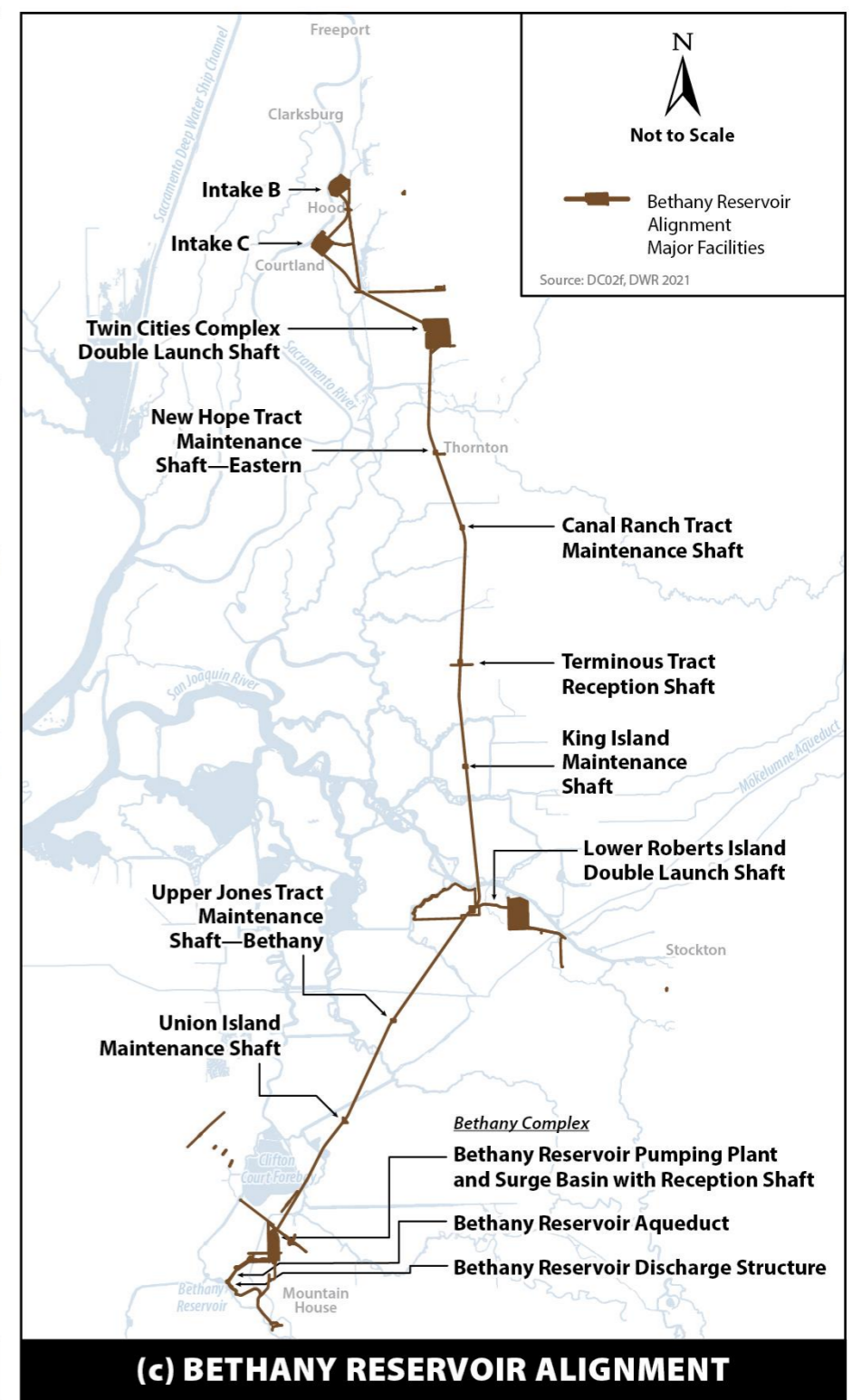
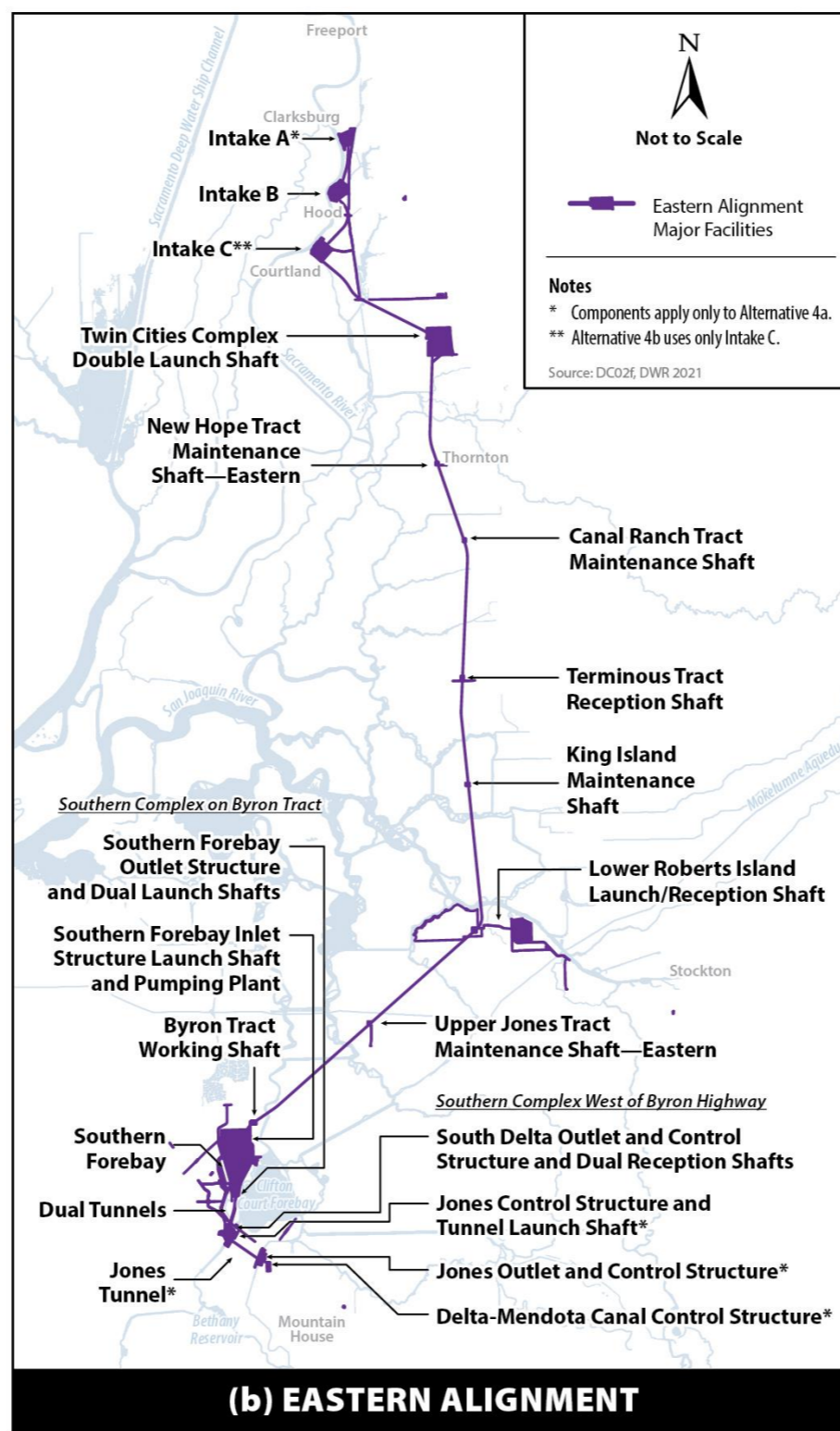
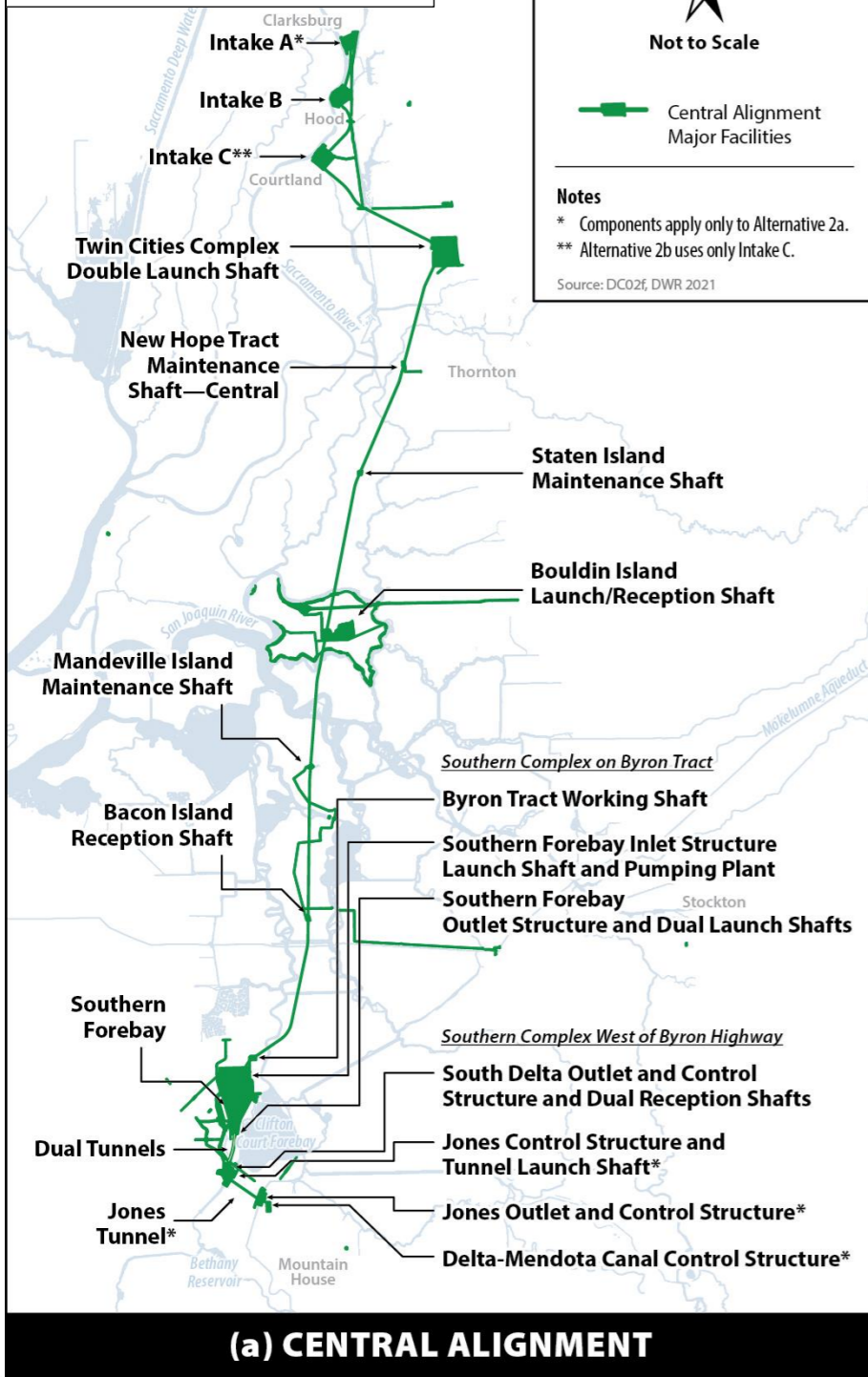
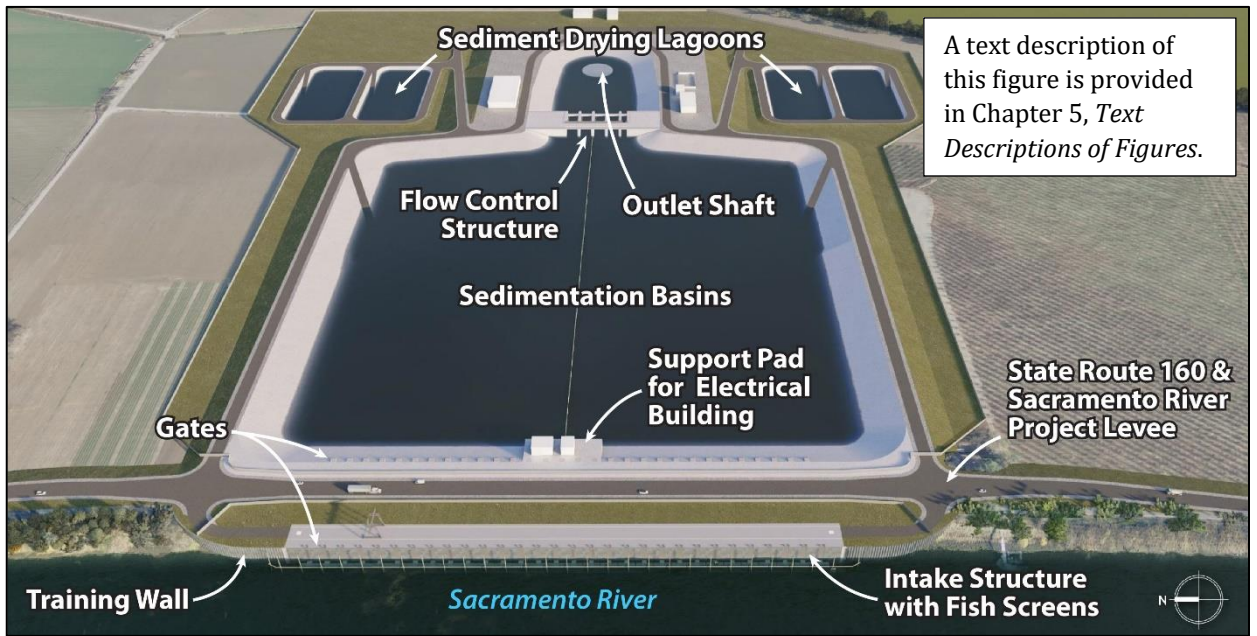
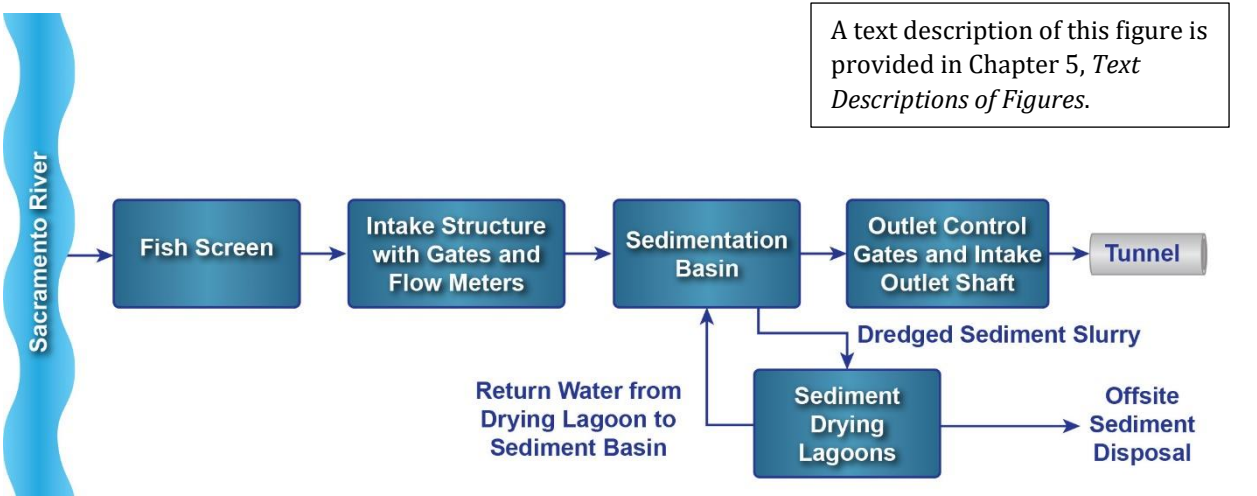


Figure 2-1. Project Alignments



A text description of this figure is provided in Chapter 5, *Text Descriptions of Figures*.

Figure 2-2. Typical Intake Configuration



A text description of this figure is provided in Chapter 5, *Text Descriptions of Figures*.

Figure 2-3. Schematic of Delta Conveyance Project Intake Facilities

A text description of this figure is provided in Chapter 5, *Text Descriptions of Figures*.

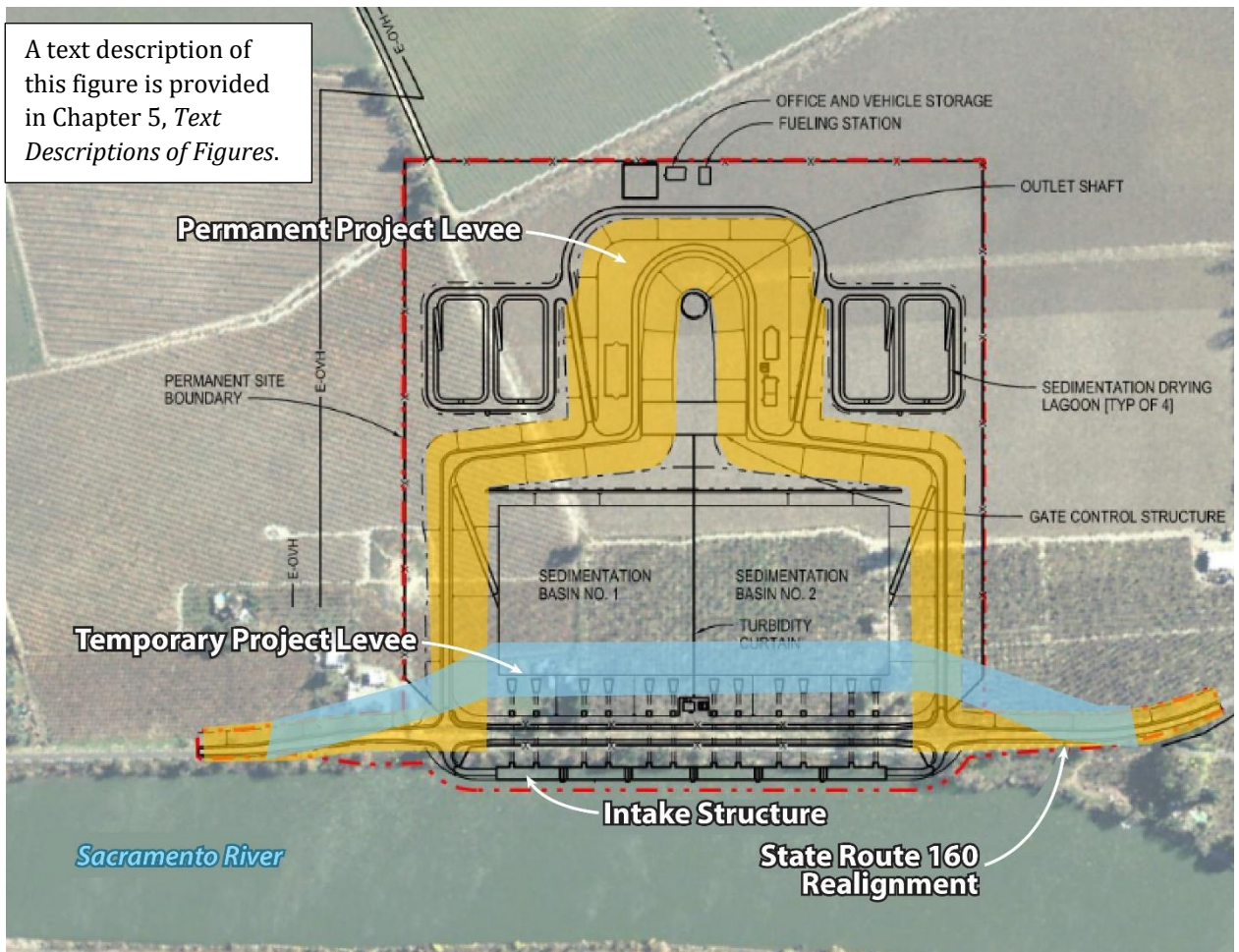
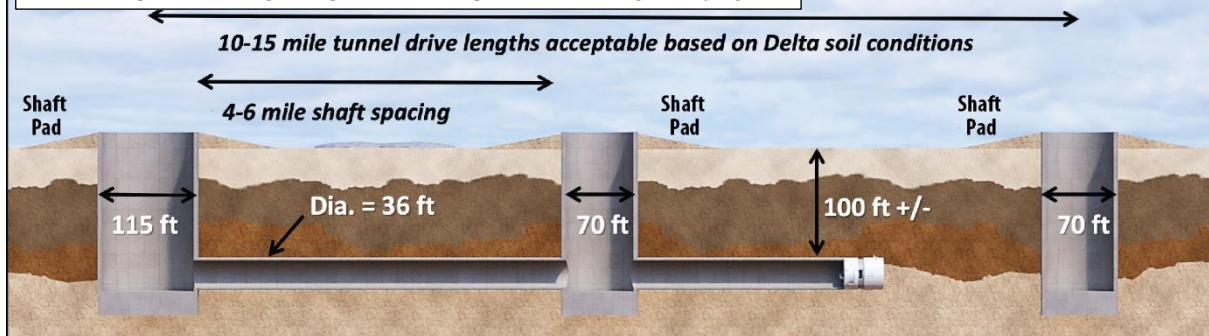


Figure 2-4. Schematic of Permanent and Temporary Levees

A text description of this figure is provided in Chapter 5, *Text Descriptions of Figures*.



### Launch Shaft

Where the tunnel boring machine (TBM) is lowered into the tunnel. Where the concrete liners are transported into the tunnel. Where the excavated material (RTM) is removed.

### Maintenance Shaft

Provides direct access to the TBM for routine maintenance work. Needed approximately every 4 to 6 miles.

### Reception Shaft

Termination point of tunnel drive. Where TBM is disassembled and lifted out of the tunnel.

Figure 2-5. Key Components of a Tunnel Drive (6,000-cfs alternatives)

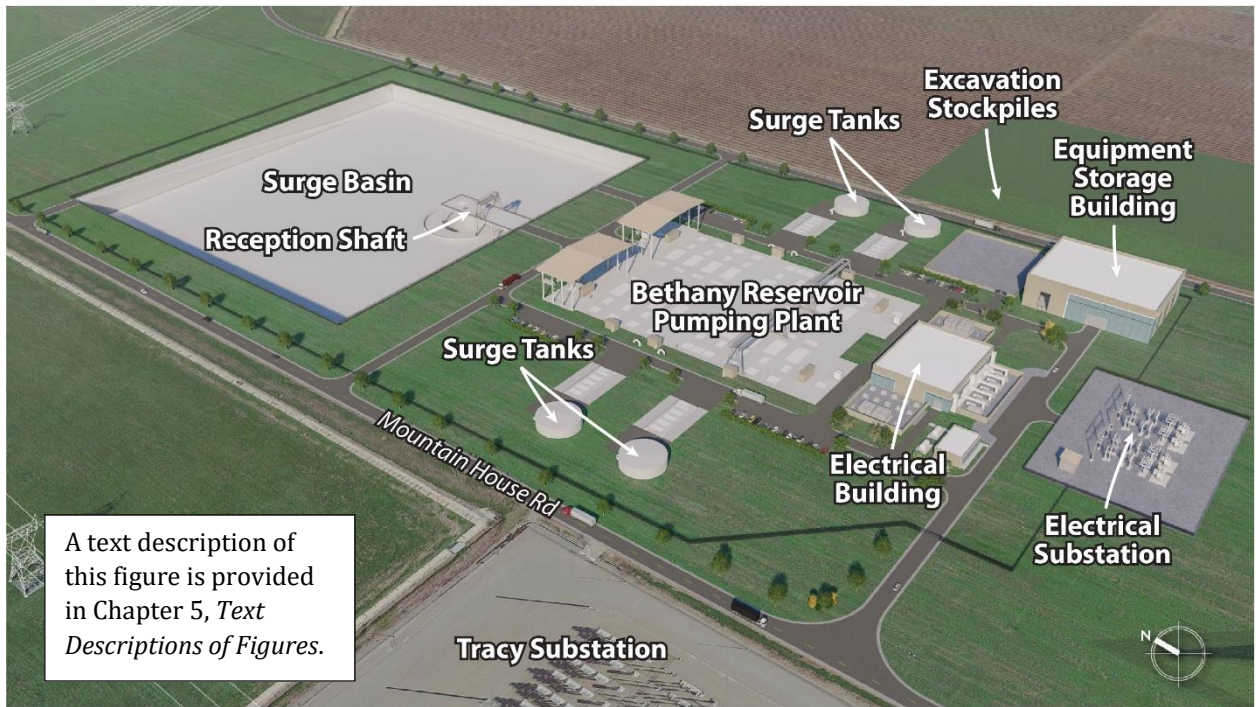


Figure 2-17. Bethany Reservoir Pumping Plant and Surge Basin

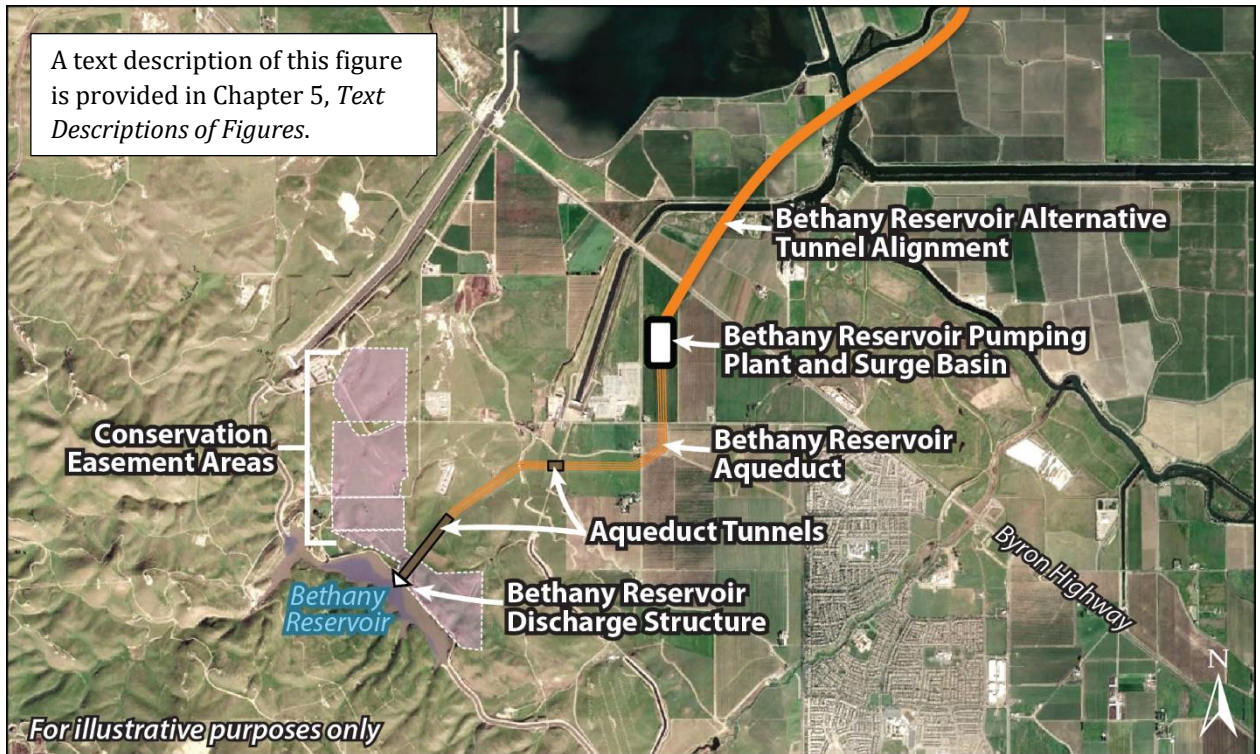


Figure 2-18. Bethany Reservoir Aqueduct Route with Tunnel Reaches